

# 5E SERIES

3 CYLINDER SERIES TRACTORS



JOHN DEERE

# 5E SERIES 3 CYLINDER SERIES TRACTORS

THE PERFECT FIT FOR YOUR GENERAL FARMING OPERATIONS

The ideal compact designed tractor for smaller livestock operations, production of grains, High-value crop applications and a general all-rounder on the farm to assist you with your daily operations.



GRAINS



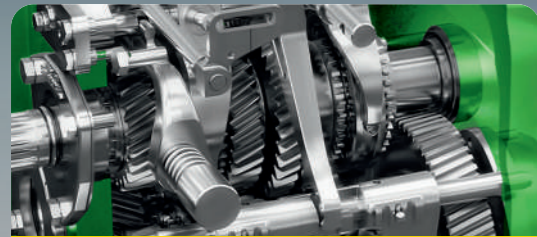
BEEF & DAIRY



HAY & FORAGE



HIGH VALUE CROP



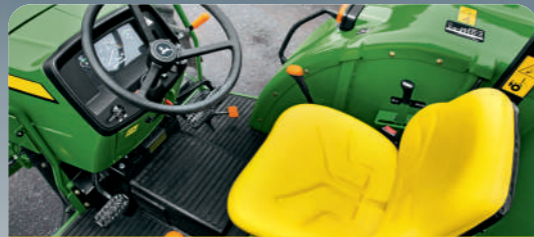
## TRANSMISSION OPTIONS

3 different transmission options to choose from:

- 9F/3R CS (Collar Shift) transmission,
- 9F/3R SyncShuttle™ TSS (Top Synchro Shaft transmission)
- 12F/12R PowrReverser™ transmission.

The SyncShuttle™ transmission with pressurised lubrication of the top shaft benefits secure unsurpassed transmission reliability in any application.

The 12F/12R PowrReverser™ transmission offers a wider selection of speed gears, a hydraulic forward reverser and Electro Hydraulic clutch, easing direction change and complementing application at the ideal speed.



## OPERATOR STATION

Increased productivity, reduced operator fatigue and greater maneuverability, are complemented by this tractor. The ergonomically designed Comfortable Operator Station includes features such as:

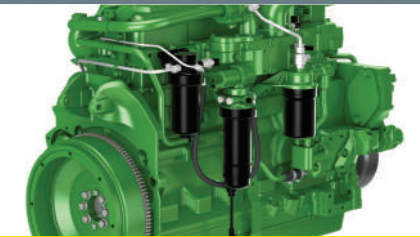
- adjustable seat
- hydrostatic steering wheel
- Multifunctional Instrumental Panel
- controls and instrumentation that are well positioned for easier operations.



## 540/540E PTO

The 540 Economic PTO (Power Take Off) is the preferred choice to ensure lowest fuel consumption throughout the operation.

The 540/540E PTO comes standard with the 5E Series tractors and allows the efficient application of PTO driven operations to benefit improved daily productivity and optimise operational cost.



## 2,9L POWERTECH™ ENGINE

This robust 2,9L John Deere PowerTech™ engine does not only boast in power, but it was engineered in being economical as well by providing you efficient fuel consumption in daily operations.

The high-performance engine delivers a **24% torque reserve** allowing ease of operation through tough spots without the need to change any gears.



## THREE POINT HITCH

The Three Point Hitch is designed to match your implements for **optimal efficiency**.

An industry leading hitch load and depth control functions, allow you to adjust the hitch function based on the specific application needs increasing productivity within any operation.



## SELF ADJUSTING OIL EMERGED BRAKES

The 5E 3 Cylinder tractor series comes standard with self adjusting oil emerged brakes. In comparison to disc brakes, this allows for a **more responsive braking** experience especially when carting a heavy load. A reliable feature that ensures a longer lifespan on your tractor's brakes.



## INBOARD PLANETARY FINAL DRIVE

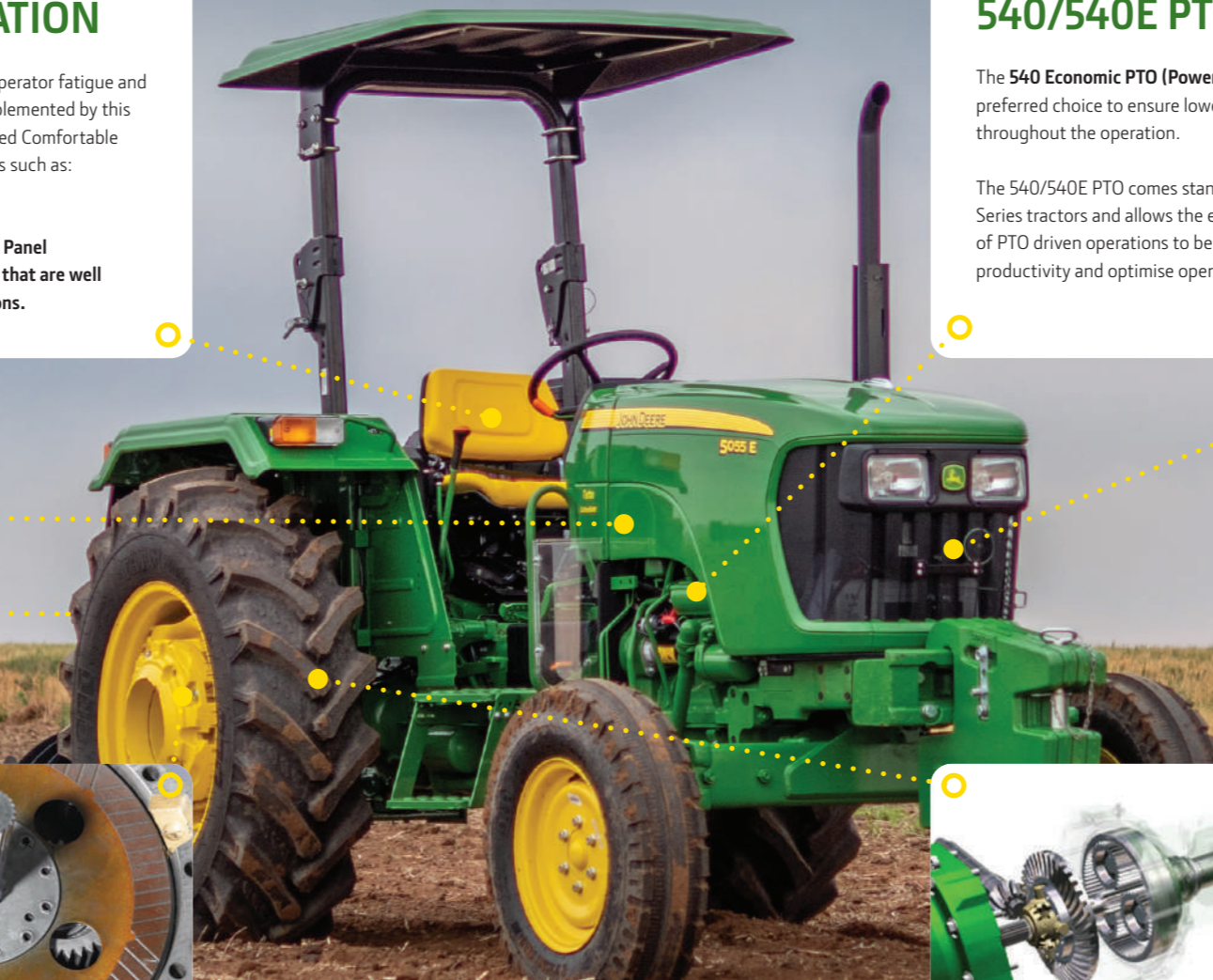
The heavy-duty Final Drive on the 5E tractors ensures trouble free application in severe heavy duty primary tillage applications.

Designed with onboard planetary final reduction gears ensuring **efficient power** through the rear axle to the ground. This feature permits longevity for the driveline components.



## GENUINE JOHN DEERE PARTS

John Deere delivers quality parts that are tailored to enhance the performance, comfort, and reliability of your tractor. Genuine tractor parts operate and function perfectly as they are created when the tractor is designed and developed. Your John Deere tractor will stay as reliable as the day it was bought - for years and years to come.



	5055E	5065E	5075E	5080E
<b>ENGINE</b>				
Rated power (97/68EC) hp (kW) @ 2400 engine rpm	57hp (42kW)	65hp (48kW)	75hp (55kW)	79hp (58.84 kW)
Maximum Torque, Nm	225 @ 1300	242 @ 1600	275 @ 1600	294 @1400
Torque Reserve, percentage (%)	20-25%			
PTO Power hp (kW) @ 2400 engine rpm	48 (35.8)	55 (41.0)	63 (46.9)	64.39 (47.7)
Aspiration	Turbo Charged			
Engine Manufacturer	John Deere Power Systems			
Engine Type (3 Cylinder), Displacement	2.9 L PowerTech, Turbo Charged Diesel Engine			
Fuel System	Rotary or Inline Fuel Injection Pump, Direct Injection			
Air Filter	Dry Type, Dual Element			
Cooling system	Liquid Cooled			
<b>TRANSMISSION</b>				
9F/3R Collarshift (CS) Transmission (with Dry Clutch)	OOS TWD / MFWD	OOS TWD / MFWD	OOS TWD / MFWD	N/A
9F/3R Top Shaft Synchronized (TSS) Transmission (with Dry Clutch)	OOS TWD / MFWD	OOS TWD / MFWD	OOS TWD / MFWD	OOS / CAB MFWD
12 / 12 PowrReverser (PR) Transmission (with Wet Clutch)	IOOS MFWD	IOOS MFWD	IOOS MFWD / CAB	OOS / CAB MFWD
<b>CLUTCH</b>				
Clutch	Dry Clutch (DC) /Wet Clutch (WC)			
<b>REAR AXLE</b>				
OOS/IOOS/Cab	Inboard Planetary Final Drives			
<b>FRONT AXLE</b>				
Variable track, heavy duty, 2WD Axle with Power Steering	OOS	OOS	OOS	N/A
Fixed, heavy duty MFWD Axle with Power Steering	OOS / IOOS / CAB	OOS / IOOS / CAB	OOS / IOOS / CAB	OOS / CAB
Differential Lock	OOS / IOOS / CAB	OOS / IOOS / CAB	OOS / IOOS / CAB	OOS / CAB
Turning Radius, meters (measured without front fenders)	4.3 w/o Brakes, 3.5 w/Brakes			
<b>STEERING</b>				
Type OOS/IOOS/CAB	Hydrostatic Power Steering			
<b>BRAKE</b>				
Type OOS/IOOS/CAB	Hydraulic Actuated Wet Disk Brakes - Self Adjusting			
Secondary Brake	Hand Brake			
<b>HYDRAULIC SYSTEM</b>				
System Type OOS/IOOS/CAB	Open Center Hydraulic System			
Steering Pump Total Flow (L/pm)	25,7			
Implement Pump (L/pm)	43,1			
Maximum No. of SCV's OOS/IOOS/CAB	1 x Double Acting - Rear Selective Control Valve			3 Rear SCV (2 STD & 1 Deluxe)
<b>ELECTRICAL SYSTEM</b>				
Alternator Size (A)	50 OOS / 110 CAB	50 OOS / 110 CAB	50 OOS / 110 CAB	90
Battery Size (Ah)	12V 88Ah	12V 100Ah	12V 100Ah	12V 100Ah
<b>3- POINT HITCH REAR</b>				
Category	3-Point (Category II) Hitch with Sway Chains			3-Point Cat II with Telescopic Stabiliser Bars
Lift Capacity at the ball (kgf)	1800			2350
<b>REAR POWER TAKE-OFF (PTO)</b>				
	OOS / IOOS / CAB	OOS / IOOS / CAB	OOS / IOOS / CAB	OOS / CAB
540 RPM Rear PTO	@ 2376 engine RPM	@ 2376 engine RPM	@ 2376 engine RPM	@ 2083 engine RPM
540E RPM Rear PTO	@ 1705 engine RPM	@ 1705 engine RPM	@ 1705 engine RPM	@ 1588 engine RPM
<b>OPERATOR STATION</b>				
OOS/IOOS (Open Operator Station & Isolated Open Operator Station)	X	X	X	OOS
CAB			X	X
Instrument Panel	Integrated Dashboard Display			
<b>CAPACITIES</b>				
Fuel Tank (L)	68 OOS / 82 CAB			115 OOS / 125 CAB
<b>DIMENSIONS and WEIGHTS</b>				
Wheelbase (mm)	2050			
Ground clearance (mm), Center MFWD without front ballast	450 for 2WD / 350 for MFWD			
Tractor weight (kg) shipping weight no ballasting	2175 OOS 2WD / 2425 OOS MFWD / 3000 CAB MFWD			3232 OOS MFWD / 3800 CAB MFWD
Maximum permissible Gross Weight (kg)	3790			4600
<b>WHEELS and TIRES</b>				
Front Wheels 2WD	7.5X16 BKT	7.5X16 BKT	7.5X16 BKT	N/A
Front Wheels MFWD	9.5x24 BKT	9.5x24 BKT	11.2x24 BKT	320 / 85R24
Rear Wheels	14.9x28 BKT	16.9x28 BKT	16.9x30 BKT	460 / 85R30

This literature has been compiled for broad circulation in Africa Middle East. While general information, pictures and descriptions are provided, some illustrations and text may include finance